



Application Procedure Specification Dhatec Bevel Protector

Dhatec Document No.: DHA415-APS-BPR

Rev.	Date	Status	Prepared by	Reviewed by	Approved by
00	09.06.2016	For Construction	D. Eens	M. Hol	I.van Assema
01	11.08.2017	For Construction	D. Eens	F. Verhaeren	I.van Assema
02	29.01.2018	For Construction	M. Voets	M. Bayens	M. Bayens

©Dhatec BV. The following document shall be considered as copyright and the design right reserved. Copying and/or disclosure of the information contained within the following document to any third-party, other than specifically for the purpose of the project is forbidden without prior written permission of the proprietor.



Elskensakker 8, NL-5571 SK
Bergeijk, The Netherlands

Tel +31 497 542 527
Fax +31 497 555 399
Email info@dhatec.nl
Web www.dhatec.nl

Change Record

Rev.	Description of Revision
00	First Issue
01	General update + addition clamping tool
02	Font style

General Information

Equipment	Bevel Protector
Supplier Name	Dhatec B.V.
Telephone No.	+31 497 542 527
Fax No.	+31 497 555 399
Contact email address	info@dhatec.nl

Disclaimer of liability: Every effort has been made to ensure that the information in this document is accurate and correct to the best of our knowledge, correct at the date of publication. However, Dhatec B.V. cannot be held responsible for consequences that follow from the claims that were made in this document.

Do not carry out any repairs or modifications on the equipment without consulting Dhatec B.V., doing so will invalidate the guarantee. The guarantee is also invalidated if accidents and damage of any form are caused as a result of improper use and/or not obeying the warnings in general as explained in this user guide. Dhatec B.V. accepts no responsibility for any personal accidents as a consequence of not following the safety instructions and warnings. This is also the case for consequential loss in any form.

Safety Requirements

These are general guidelines, all personnel involved should adhere to the safety requirements of the particular location at which they are performing their operations.

Dhatec recommends wearing of suitable PPE while handling their products. This includes gloves, safety shoes, safety glasses, safety helmet, hearing protection and suitable work clothing.

The working areas should be kept tidy at all times in order to minimize the risk of trips and slips.

All personnel involved should use suitable manual handling techniques and follow industry recommended guidelines for lifting and moving, such as those described in "Ergonomic Guidelines for Manual Material Handling" published by the National Institute for Occupational Safety and Health (Publication 2007-131), or those otherwise prescribed by the client.

Required Equipment

There are 2 toolsets with which the Bevel Protector can be applied/removed. First of all, we have the hammer with pick. For applying only the hammer is necessary, for removal the pick has to be used in combination with the hammer.

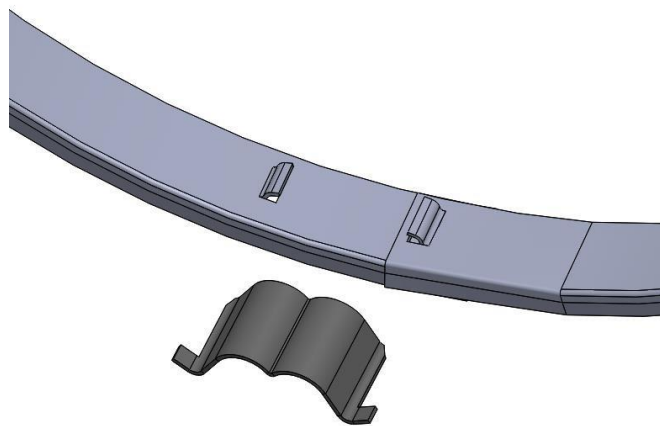
The 2nd toolset consists out of the Clamping Tool with its breaks. Each beak has its own range. Please confirm you have the right beak for your pipe closure. Please read the [APS for the Clamping Tool](#) before usage. If there are any problems with one of the toolsets, please contact Dhatec.



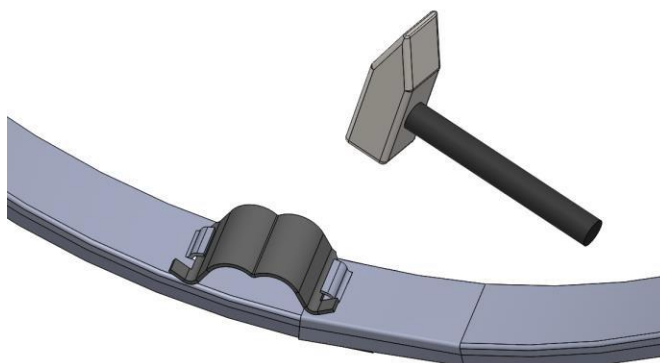
Figure 1. Dhatec Bevel Protector Toolsets: Hammer with pick (L), Clamping Tool (R)

PLEASE READ THESE INSTRUCTIONS BEFORE FASTENING THE REUSABLE STEEL BEVEL PROTECTOR**Instructions for application with hammer**

1. Take the bevel Take the bevel protector in both hands and put it in the pipe. Fit the separate closing clip between the lips of the bevel protector as shown in figure 2 and 3. Dhatec can provide a special clamp for working with large diameter bevel protectors. This clamp keeps the bevel protector in position allowing the operator to have both hands free for fitting the metal ring on the pipe.

**Figure. 2**

2. Give a few strokes with a hammer (1 kg) on the top of the clip. Hammer the curve in two little curves as you can see in figure 4. Hammer on the circumference of the bevel protector to move it deeper in the pipe. Hammer 1 or 2 times on the two little curves for final fastening.

**Figure. 3**

3. If you want a secure fitting of the bevel protector be sure that the middle of the two little curves makes contact with the bevel protector as you can see in figure 3. The overlap of the two ends of the bevel protector must be between 22 and 37 mm. After removal, the bevel protector may only be placed again with a new separate clip.

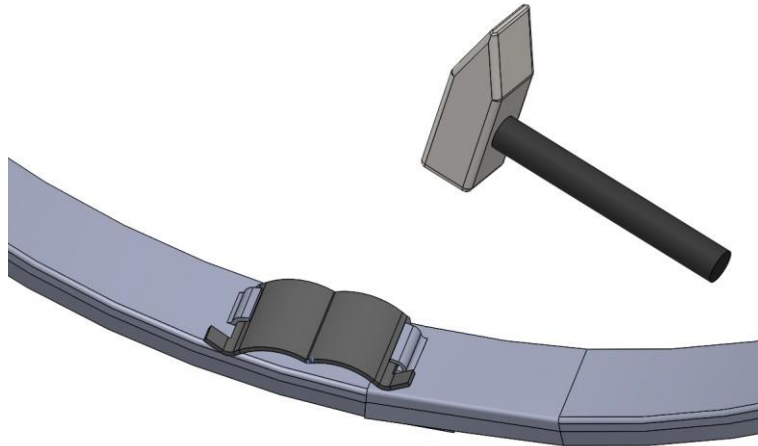
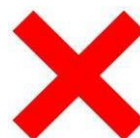
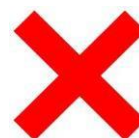


Figure. 4

Guidelines to check if Clamping Clip is applied properly



The Bevel Protector should be fully positioned inside the Pipe End Cap:



DON'T FORGET TO CHECK IF THE STEEL BEVEL PROTECTOR IS SECURE ENOUGH FOR ITS PURPOSE AND IF IT WILL WITHSTAND VIBRATION DURING TRANSPORT OF THE PIPES!

Removal of the Clamping Clip

For removal of the Clamping Clip, use Dhatec's Toolset.

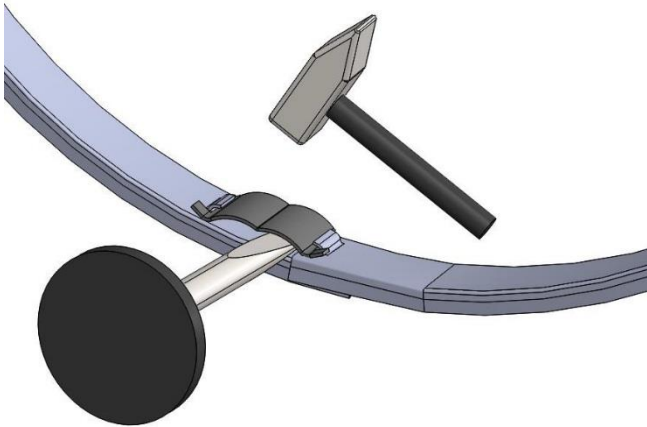


Figure 5. Removal of Clamping Clip

This instruction manual is put together with great care. When safety risks and issues are noticed, which are not covered by this instruction, please contact Dhatec to share this remark.