

Datasheet Bevel Protector and PE Plug



Release date : 10-06-2013
Revision date : 18-10-2017

Elskensakker 8, NL-5571 SK
Bergeijk, The Netherlands

Tel +31 497 542527
Fax +31 497 555399
Email info@dhatec.nl
Web www.dhatec.nl

General information

The PE Plug is used in combination with the Dhatec Steel Bevel Protector to provide optimal pipe end protection and pipe closure at the same time. The PE Plug prevents penetration from water, dirt and dust.

Application

The PE Plug is clamped inside the pipe with the Steel Bevel Protector. For each external pipe diameter there are several plugs available, specific dimensions can be made. The PE Plug is elastic and can cover a small wall thickness range.

Features

- ✓ Bevel protection and pipe closure simultaneously
- ✓ Suitable for lifting with hooks or spreader bar
- ✓ Suitable for pipe transport
- ✓ Can be applied on stacked pipes
- ✓ Suitable for long term storage in all weather conditions

Material specifications

Bevel Protector : Steel DD11 (Material Nr. 1.0332)
: Zinc plated steel (Material Nr. 1.0226)
: Stainless steel 304 (Material Nr. 1.4031)

PE Plug : Low Density Polyethylene (LDPE)
: Hardness: 40° shore D
: Elongation at break: 1600%
: Tensile strength at break: 21 Mpa
: Modules of elasticity: 60 Mpa
: Material thickness: approx. 2mm (0.08")
: Depth: 100mm (3.9")

Product range : 200mm – 1.422,4mm (7.9" – 56")
Product code : PL

Commodity / HS code : PE Plug: 39235090
: Bevel Protector: 73269098

Additional information

- Application temperature: -40°C / 60°C (-40°F / 140°F)
- UV-resistance: For outdoor use: 0,5-2 years
- Application time: approx. 1 minute per pipe end with 1 person



Fig.1 Bevel Protector and PE Plug

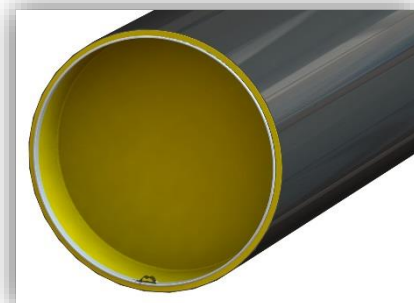


Fig.2 Pipe with Bevel Protector and PE Plug